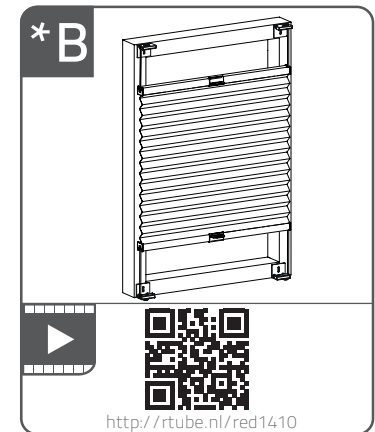
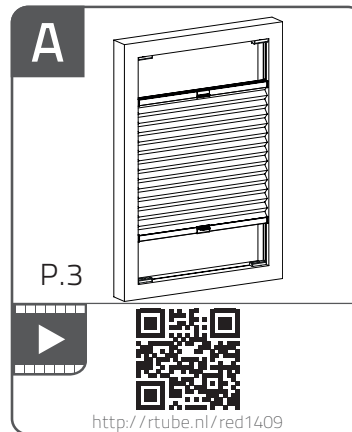
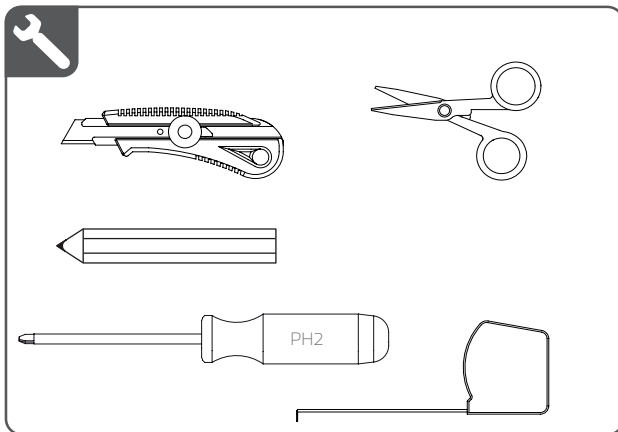
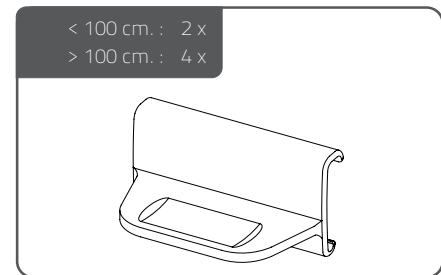
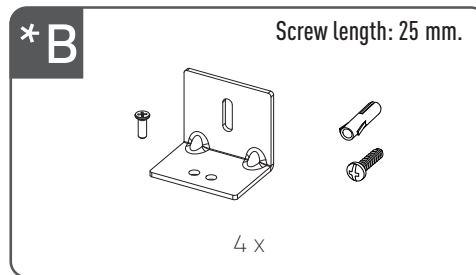
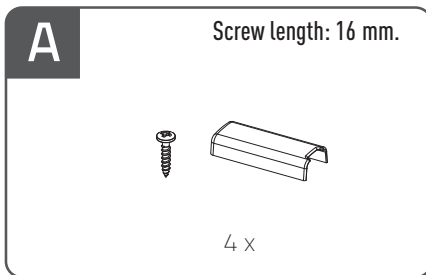
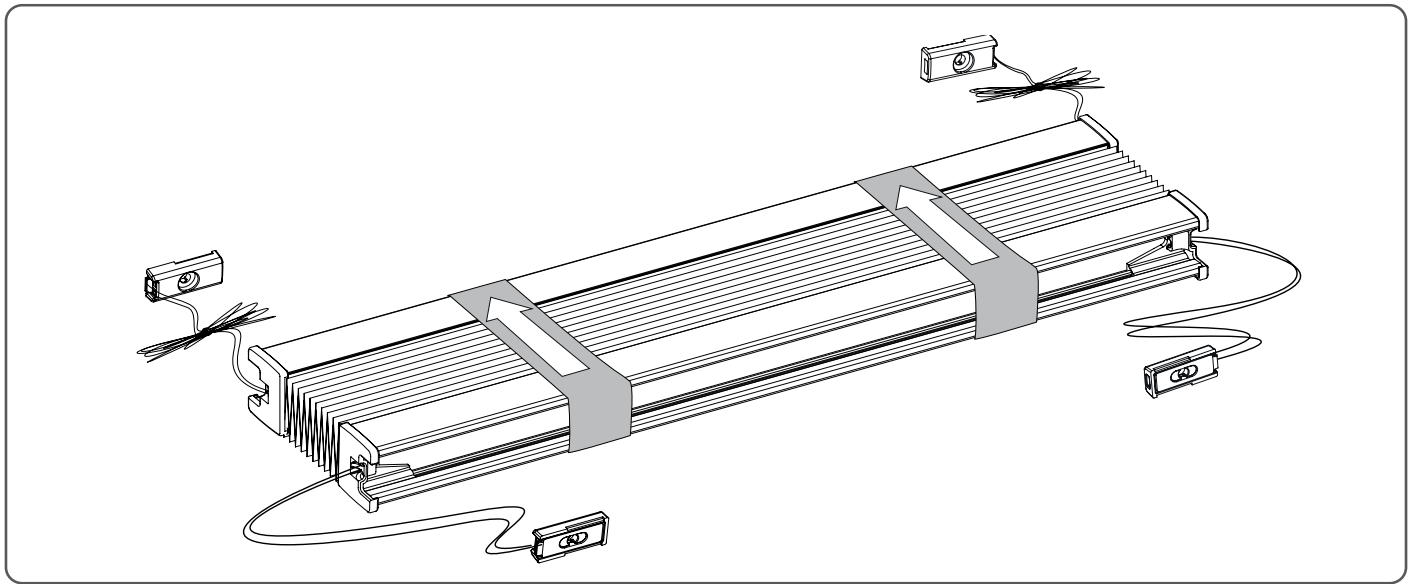


Maya / Fiona Pleated blind

INSTALLATION INSTRUCTIONS

Made in China for Kid Interior, Gilhusveien 1, N-3426
Gullaug, and Hemtex, Prognosgatan 22, SE-504 64 Borås.
www.kidhemtex.com/contacts.



GB • To be installed with at least 1.5 cm clearance from the frame on either side of the curtain and clearance of at least 5 cm from the windowpane. Good ventilation between the pleated blind and the windowpane prevents uneven warming of the window pane.

NO • Monteres med 1,5 cm avstand til karm i hver side av gardinen og minimum 5 cm avstand til vindusglasset. God lufting mellom plisségardin og vindusglass forhindrer ujevn oppvarming av vindusglasset.

SE • Monteras med minst 1,5 cm avstånd till karmen på var sida av gardinen och med minst 5 cm avstånd till fönsterglas. Genom god ventilation mellan plisségardin och fönsterglas förhindras ojämn uppvärmning av fönsterglas.

FI • Asennetaan kummaltakin puolelta vähintään 1,5 cm:n etäisyydelle ikkunanpuutteesta ja 5 cm:n etäisyydelle lasista ilmanvaihdon varmistamiseksi. Hyvä ilmanvaihto laskosverhon ja ikkunan välillä ehkäisee ikkunalasin lämpenemistä epätasaisesti.

EST • Paigaldage aknaraami mõlemast küljest vähemalt 1,5 cm kaugusele ja aknakaasist vähemalt 5 cm kaugusele. Hea ventilatsioon voldikgardina ja aknakaasi vahel väldib aknakaasi ebahühtlast soojenemist.

***B)** Bracket for mounting on external frame sold separately.

***B)** It is important that the depth of the frame is wide enough in relation to the length of the screws. This is to ensure that the screws do not hit the window pane causing cracks in the glass.

***B)** Feste for montering utvendig karm selges separat.

***B)** Det er viktig at dybden på karmen er tilstrekkelig bred nok i forhold til lengden på skruene. Dette for at skruene ikke skal treffe vindusglasset da dette kan medføre sprekker i glasset.

***B)** Fäste för montering på utväändig karm säljs separat.

***B)** Det är viktigt att djupet på karmen är tillräckligt brett i förhållande till längden på skruvarna. Detta för att skruvarna inte ska träffa fönsterglas då det kan orsaka sprickor i glas.

***B)** Helat asennukseen ikkunanpuutteiden ulkopuolelle myydään erikseen.

***B)** On tärkeää, että ikkunanpuutteiden syvyys on riittävä suhteessa ruuvien pituuteen. Ruuvit eivät saa osua ikkunalasiin, sillä se voi aiheuttaa lasin murtumisen.

***B)** Välisraamile kinnitamiseks vajalikku krunsteini müüakse eraldi.

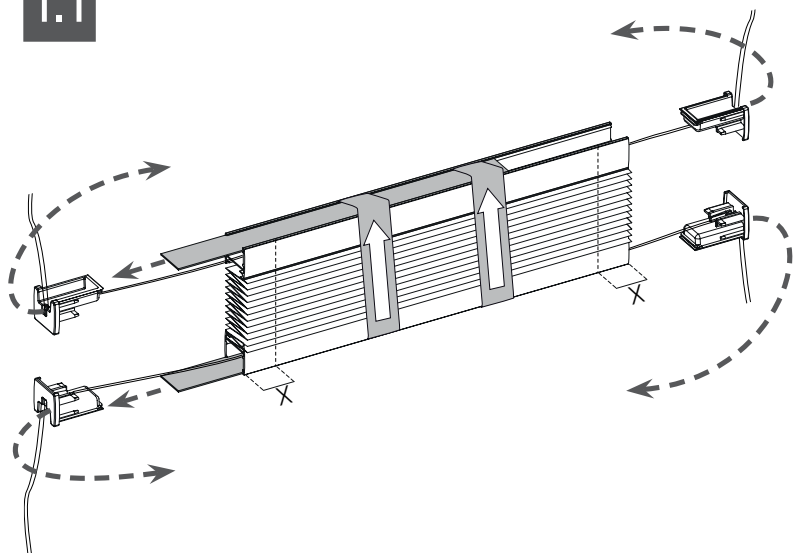
***B)** On tähtis, et raami süvend on piisavalt lai olenevalt kruvide pikkusest. See peab tagama, et kruvid ei satuks vastu aknakaasiega lööks sellesse mõrsid.

Maya / Fiona Pleated blind

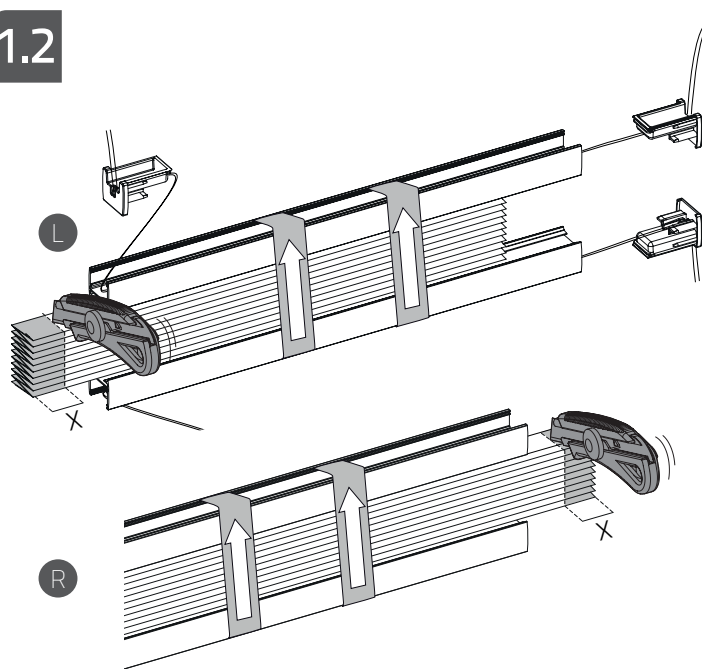
INSTALLATION INSTRUCTIONS

Made in China for Kid Interior, Gilhusveien 1, N-3426
Gullaug, and Hemtex, Prognosgatan 22, SE-504 64 Borås.
www.kidhemtex.com/contacts.

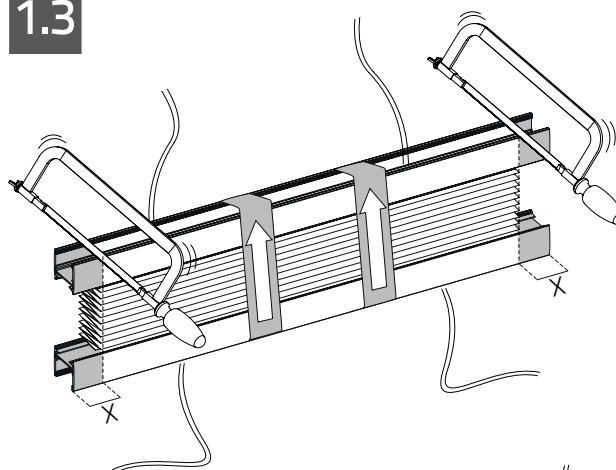
1.1



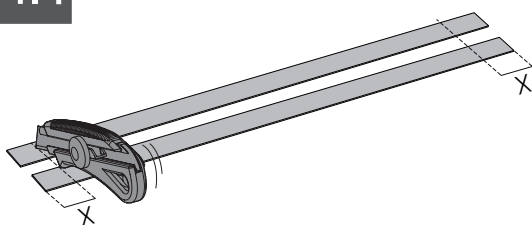
1.2



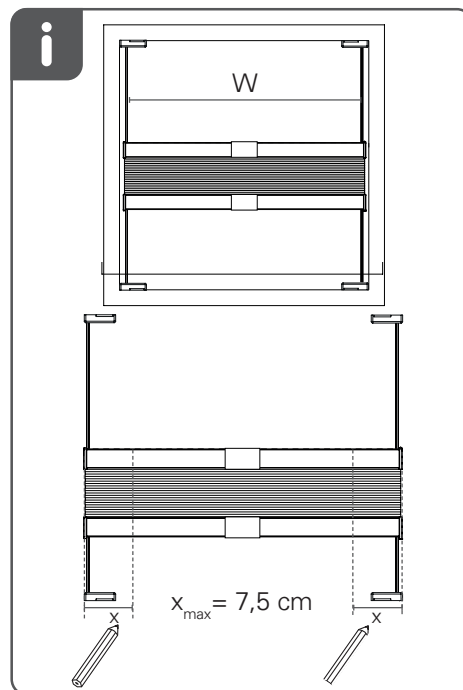
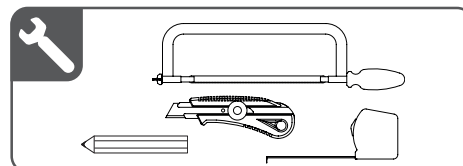
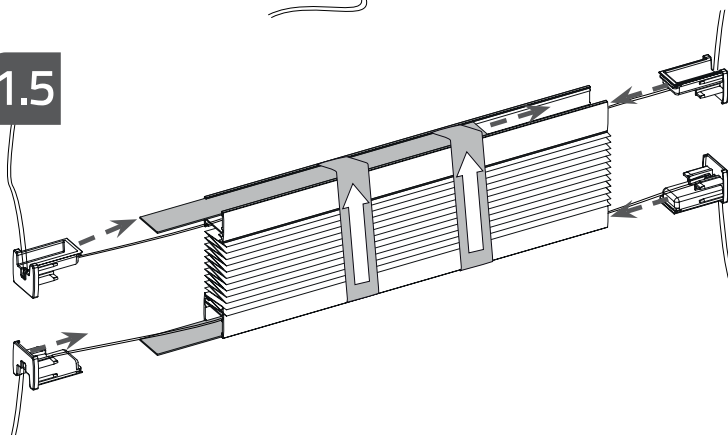
1.3



1.4



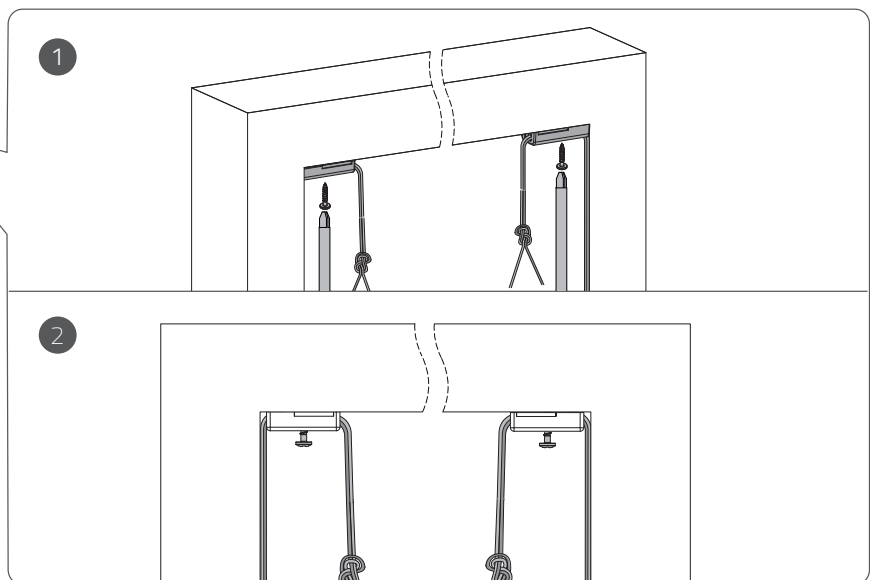
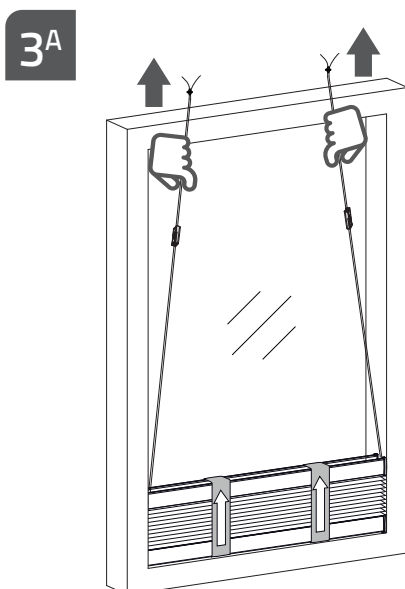
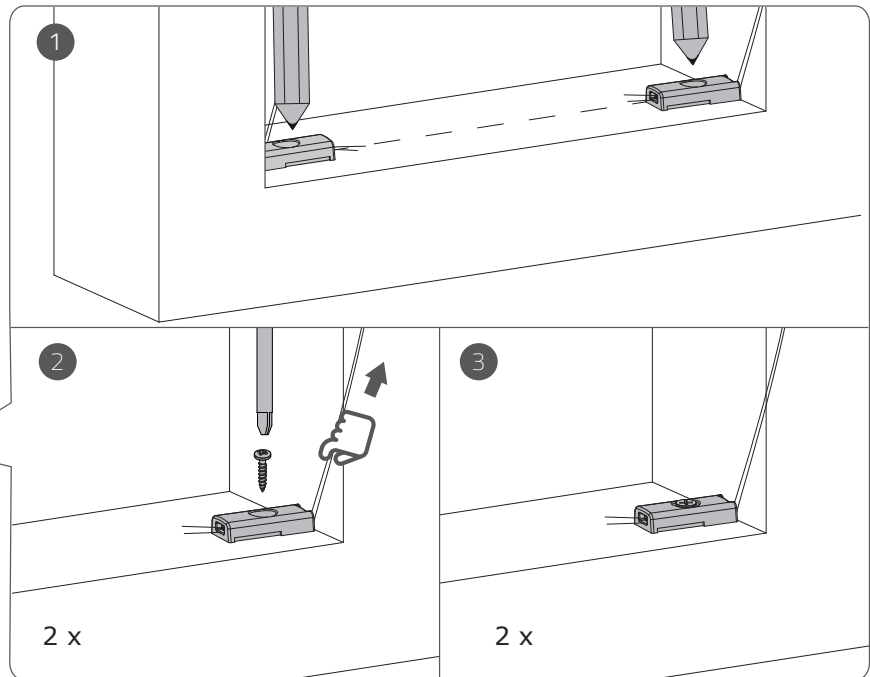
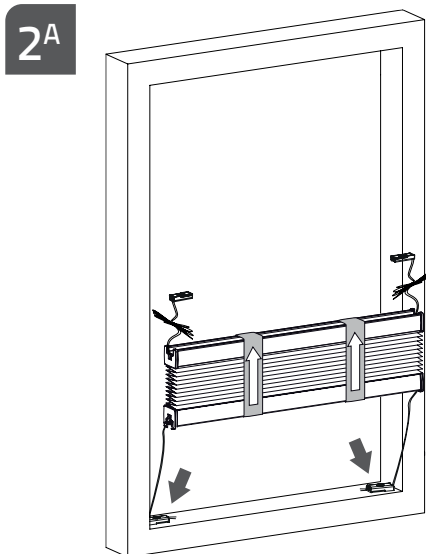
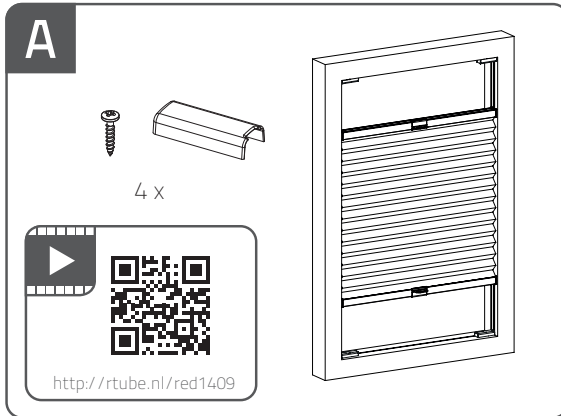
1.5



Maya / Fiona Pleated blind

INSTALLATION INSTRUCTIONS

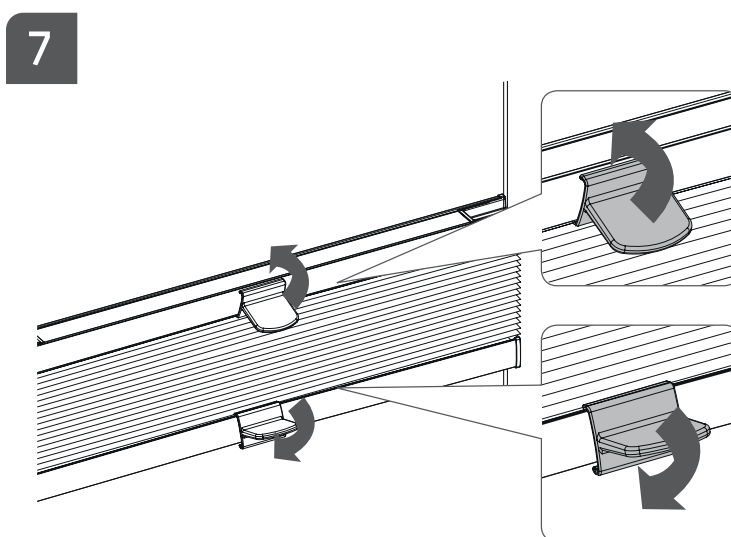
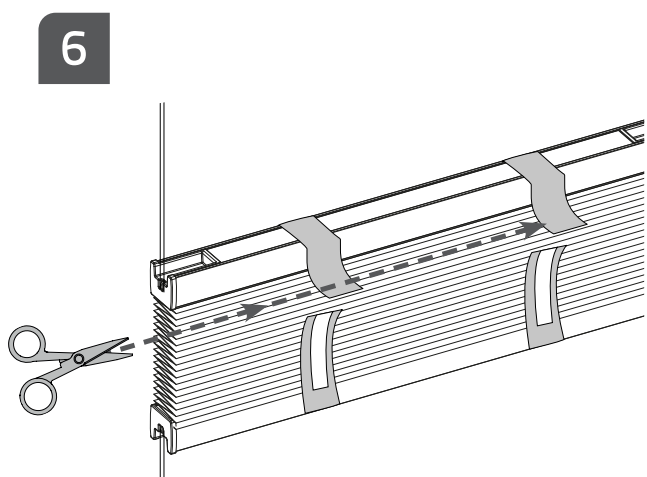
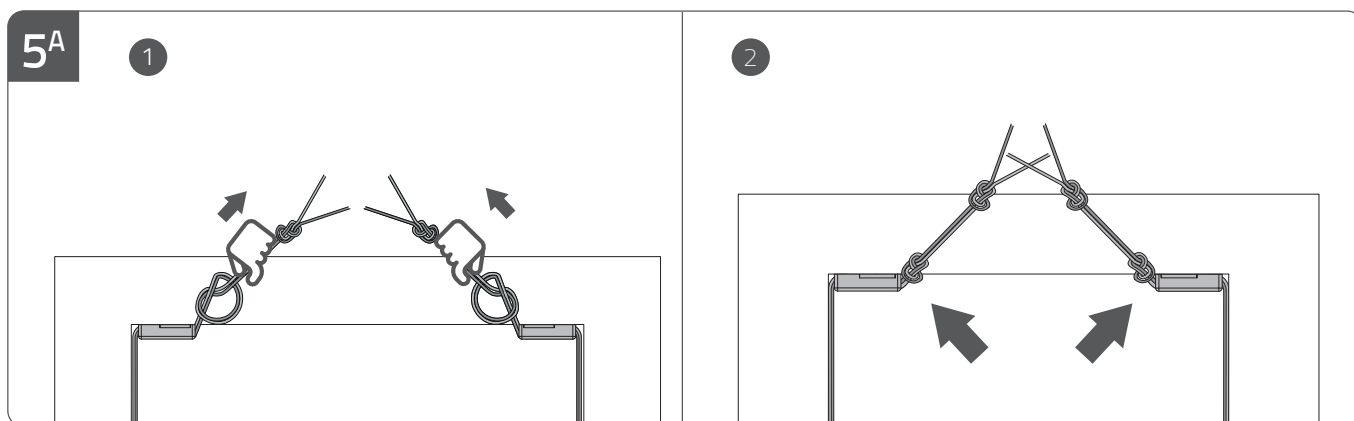
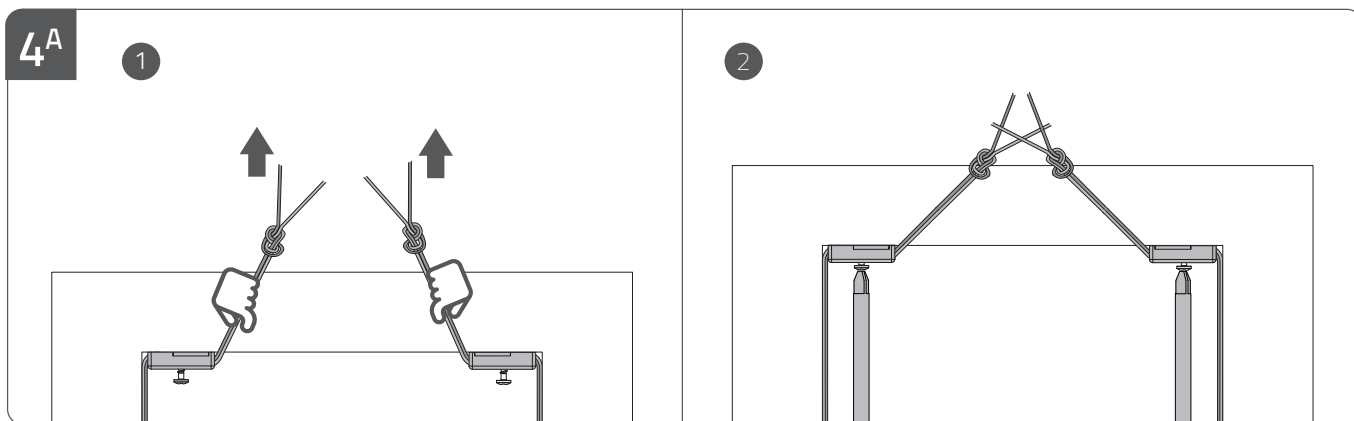
Made in China for Kid Interior, Gilhusveien 1, N-3426
Gullaug, and Hemtex, Prognosgatan 22, SE-504 64 Borås.
www.kidhemtex.com/contacts.



Maya / Fiona Pleated blind

INSTALLATION INSTRUCTIONS

Made in China for Kid Interior, Gilhusveien 1, N-3426
Gullaug, and Hemtex, Prognosgatan 22, SE-504 64 Borås.
www.kidhemtex.com/contacts.

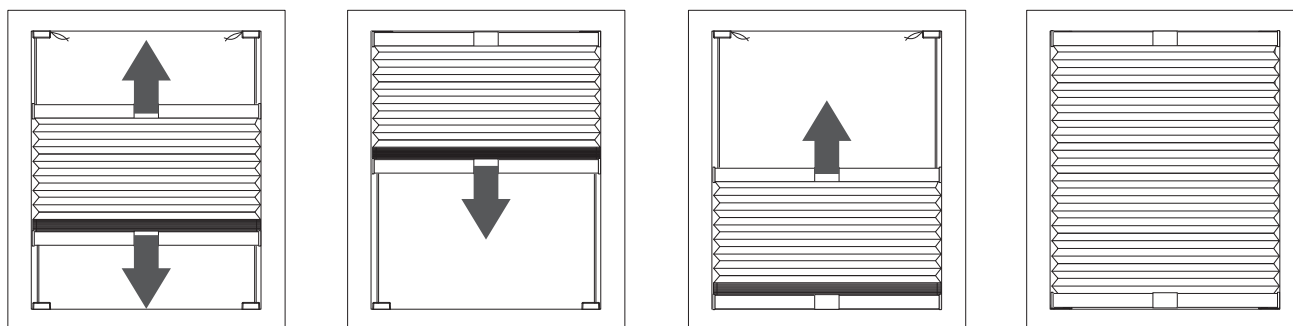


Maya / Fiona Pleated blind

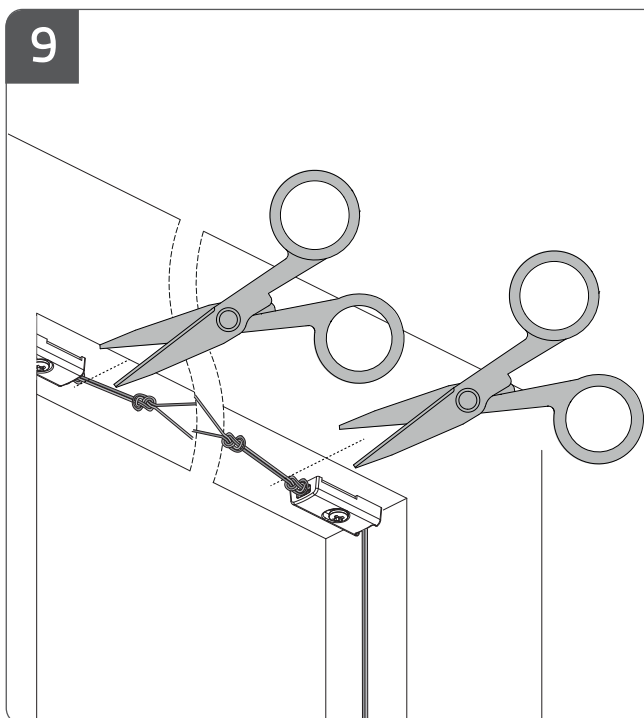
INSTALLATION INSTRUCTIONS

Made in China for Kid Interior, Gilhusveien 1, N-3426
Gullaug, and Hemtex, Prognosgatan 22, SE-504 64 Borås.
www.kidhemtex.com/contacts.

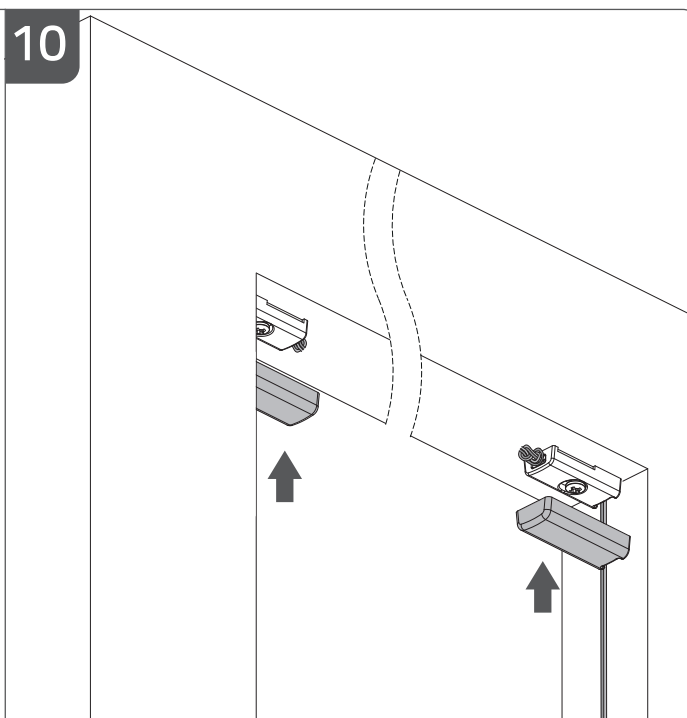
8



9



10



i

